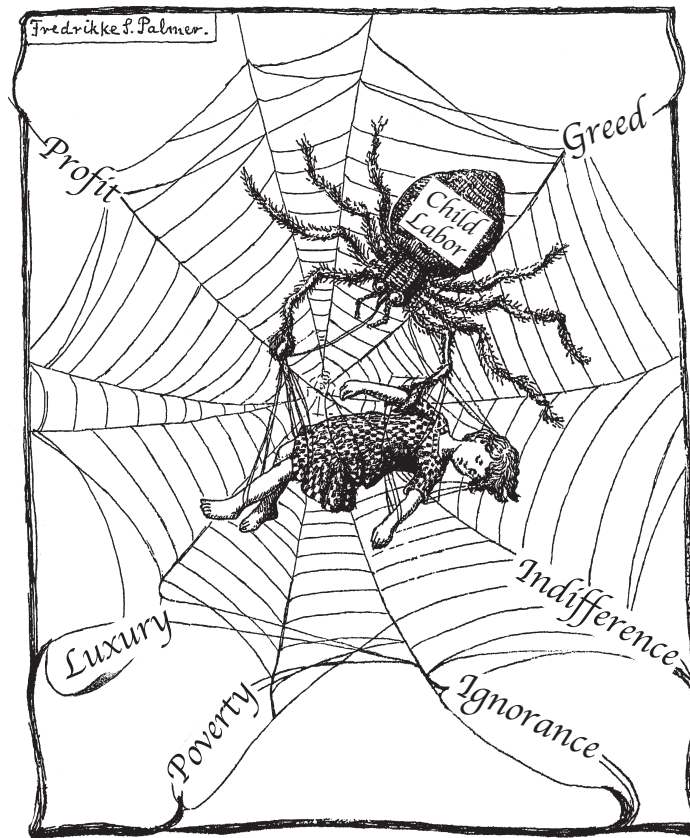


Base your answers to questions 7 through 9 on the cartoon below and on your knowledge of social studies.

### Child Labor



**What are you going to do about it?**

Source: Fredrikke Palmer, *Women's Journal and Suffrage News*, 1916 (adapted)

7 What is the primary issue addressed in this cartoon? [1]

Score

8 Based on the cartoon, identify **two** factors that were responsible for the issue addressed in the cartoon. [2]

(1) \_\_\_\_\_

Score

(2) \_\_\_\_\_

Score

9 Identify **one** group of people who helped cause the situation shown in the cartoon. [1]

Score